

STROMAT-^{if}

intelligent · individual · illuminated



The fleet solution

STROMAT-iF

The **STROMAT-iF** is the ideal solution for **fleet charging**. Each vehicle gets its **own RFID chip** to start the charging process.

In addition, the **mileage of the vehicle** is entered directly at the display of the charging station. This **individual charging information** is then transferred to the **MANAGER backend system** and is then **available centrally**. The charging processes can also be carried out **across locations** and **evaluated centrally** in the backend system.

All charging points and their associated charges are **clearly displayed** in the overview screen of the **MANAGER**.

Just-in-time control



Malteser NOW		MANAGER		DE EN	
●	Aalen Ladesäule 1	AA-MH 1065E	7,3 kWh	1,0 h	
	Aalen Ladesäule 2	AA-MH 1062E	3,5 kWh	1,3 h	
●	Aalen Ladesäule 3				
●	Aalen Ladesäule 4	S-MH 2391E	23,0 kWh	1,6 h	
●	Heidenheim Ladesäule 1	AA-MH 1064E	3,6 kWh	0,4 h	
●	Heidenheim Ladesäule 2				
●	Ellwangen Ladesäule 1				
●	Ellwangen Ladesäule 2	AA-MH 1063E	5 kWh	0,5 h	
●	Ellwangen Ladesäule 3	S-MH 2390E	37 kWh	31,7 h	

***Ideal for companies,
logisticians as well as care
and assistance services***

“The Germany-wide solution for our entire fleet.”

Nico Baumann, fleet manager
MALTESER Nord-Ost-Württemberg



Malteser NOW Consumptions	AA-MH 100E from 2024-05-01	2024-06-08 21:47 till 2024-06-08			
Time	Charge	Charge point	Mileage	Costs	
26.05.24 10:12	12,3 kWh	Aalen Ladesäule 1	12045	7,59 €	
30.05.24 10:08	24,9 kWh	Aalen Ladesäule 3	12161	6,96 €	
02.06.24 10:08	22,6 kWh	Ellwangen Ladesäule 1	12273	7,72 €	
06.06.24 10:03	26,2 kWh	Ellwangen Ladesäule 1	12413	8,40 €	

In Excel format, the **individual charging processes**, including the respective **vehicle mileage**, can be viewed just-in-time and can be further evaluated accordingly.

Optionally, the **costs per trip** are also determined automatically.

Mileage:

+ **2 3 6 8 0** km

Mail delivery

- ☐ off
- ☐ once
- ☒ regularly 1 x per month
- ☐ regularly 1 x per year

1. email address

- ☒ regularly 1 x per month
- ☐ regularly 1 x per year

2. email address

DE | EN ☒ ☐

There are also extensive options for **manual and automatic export** of charging information.

Optionally, direct **interface connections** to further accounting systems such as **SAP, Lexware or similar** are also possible.



The intelligent fleet solution



STROMAT-iF

Load management simply smart

The **STROMAT-iF** offers even more highlights: **Associated with the solar system**, the device ensures that only the **power you have produced** gets into the car.

If **several STROMATs** are used, the **integrated load management** controls the distribution of the **total electric output** to the charging points.

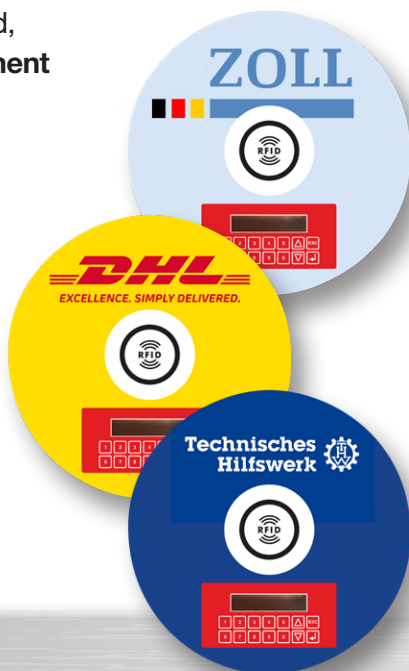
In connection with an **additional energy meter**, installed in your **electrical distribution system**, the load management can be extended to the **entire house connection**.



Your logo greets you in the parking lot

STROMAT-iF impresses with a **unique noble glass front** that can be **printed individually**. This offers you a **scope of design options** for your **corporate design** or even just for your **dreams and desires ...**

The **surrounding lighting** always shows you the **current state** of the charging system.



Technical data:

General

Plug type:

Type 2

Charging cable:

7 m (optionally 10 m)

Charging current: 16/32 A

Charging power: 11/22 kW

Rules:

Mode 3, IEC 62196

DIN EN 61851-1

Dimensions

Width: 340 mm

Height: 340 mm

Depth: 178 mm

Weight: 9/10.5 kg

Ambient conditions

Temperature range: -30..50 °C

Protection class: IP54

Electrical connection

3-phase:

L1, L2, L3, N, PE

Power supply:

400 V, 50/60 Hz

Maximum on-site protection:

20/40 A

On-site residual current circuit breaker:

Typ A, 30 mA

Interfaces

WLAN Hotspot

Ethernet: 10/100 MBit

RS485: Modbus

USB: 2.0

LTE modem (optionally)

Operation

Display: LED, display

Authentication: RFID, app

Settings: web browser, app